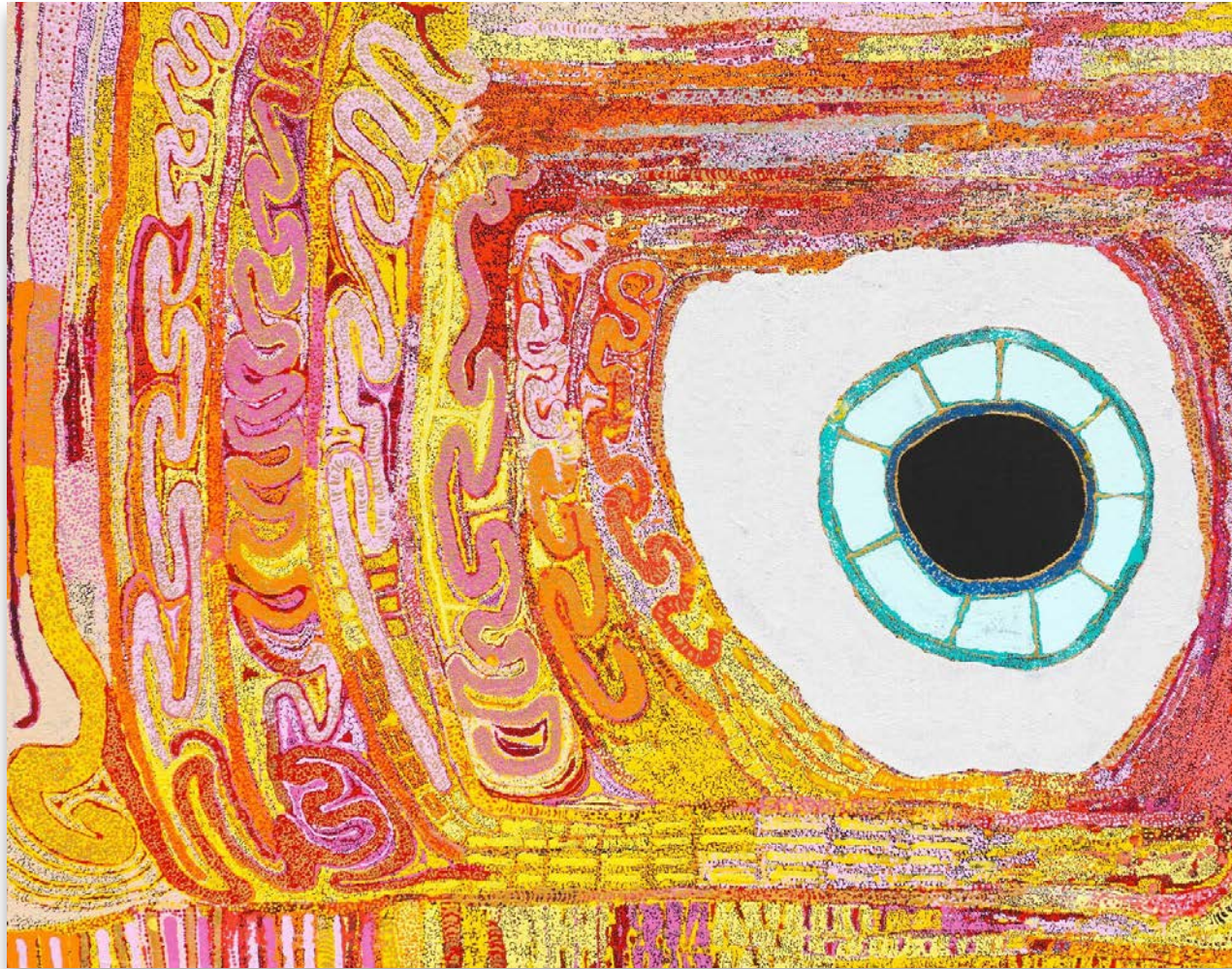




SYDNEY
CONTEMPORARY

—
2024

D · C



DANIEL WALBIDI

born 1983

Yulparitja and Mangala

Kirriwirri 2024

synthetic polymer paint on linen

109 × 136 cm

AUD 85,000



TIMOTHY COOK

born 1958

Tiwi

Kulama 2024

natural earth pigments on linen

150 × 120 cm

AUD 22,000



JOHNNY WARANGULA TJUPURRULA

circa 1922–2001

Pintupi

Yalpiri Water Story 1973

synthetic polymer paint on composition board

75 × 55 cm

AUD 120,000



JOHNNY WARANGULA TJUPURRULA

circa 1922–2001

Pintupi

Women and Old Man at Kampurarpa 1973

synthetic polymer paint on composition board

91.5 × 12.5 cm

AUD 60,000



NAATA NUNGURRAYI

1932 – 2021

Pintupi

Untitled – Marrapinti 2005

synthetic polymer paint on linen

92 × 61 cm

AUD 22,000



NAATA NUNGURRAYI

1932 – 2021

Pintupi

Marrapinti 2004

synthetic polymer paint on linen

122.5 × 91.5 cm

AUD 30,000



GEORGE TJUNGURRAYI

born 1943

Pintupi

Untitled – Kirimalunya 2009

synthetic polymer paint on linen

242 × 183 cm

AUD 330,000



ANGELINA PWERLE

born 1946

Anmatyerr

Ariperre Awelye 1998

synthetic polymer paint on linen

149 x 91 cm

AUD 36,000



EMILY KAM KNGWARRAY

circa 1910–1996

Anmatyerr

Algura 4 1991

Synthetic polymer paint on linen

122 × 210 cm

AUD 1,000,000



DICKIE MINYINTIRI

1915–2014

Pitjantjatjara

Wati-ku Inma 2011

synthetic polymer paint on linen

122 × 122 cm

AUD 30,000



1



4



6



9



11



14



16



21



2



5



7



10



12



15



17



19



22



3



8



13



18



20

IGNATIA DJANGHARA; WAIGAN DJANGHARA; MOLLY Wandjina

*individual prices available upon request



JANANGOO BUTCHER CHEREL

circa 1920 – 2009

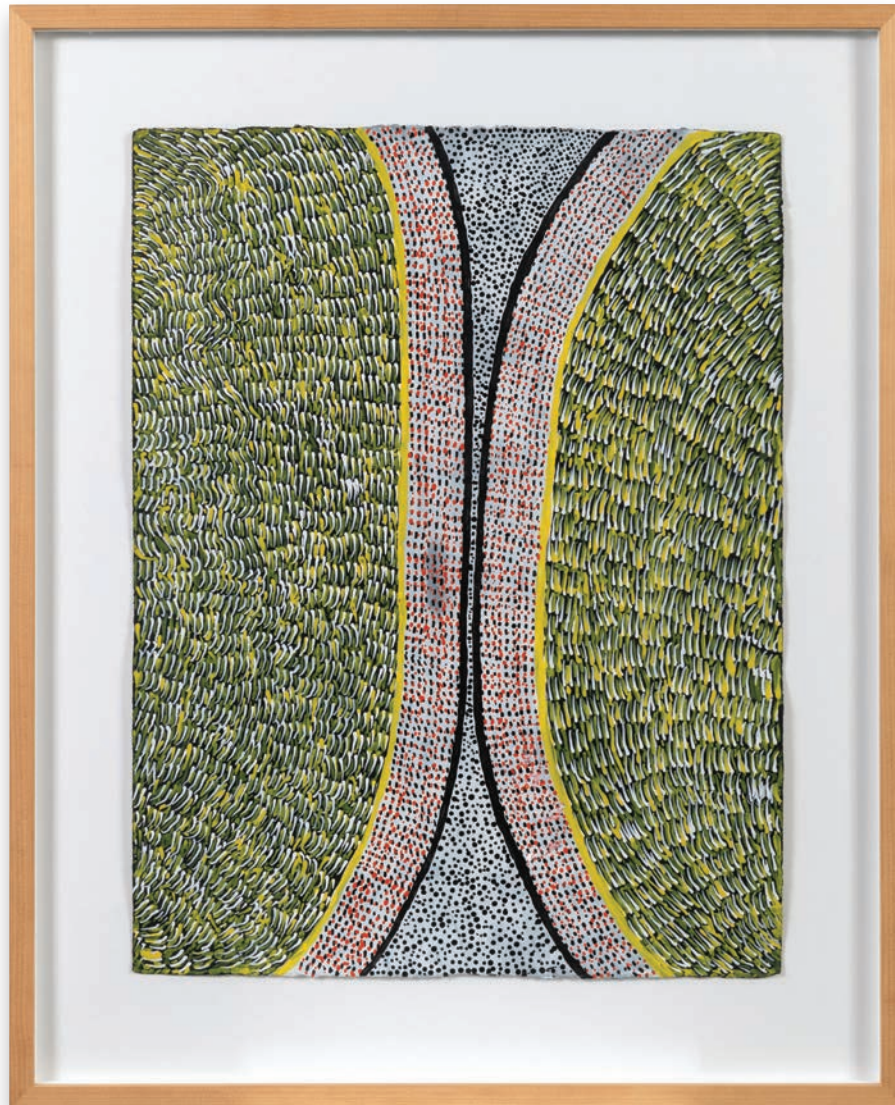
Gooniyandi and Gija

Gooji 2006

synthetic polymer paint on Velin Arches paper

104 × 75 cm

AUD 8,000



JANANGOO BUTCHER CHEREL

circa 1920 – 2009

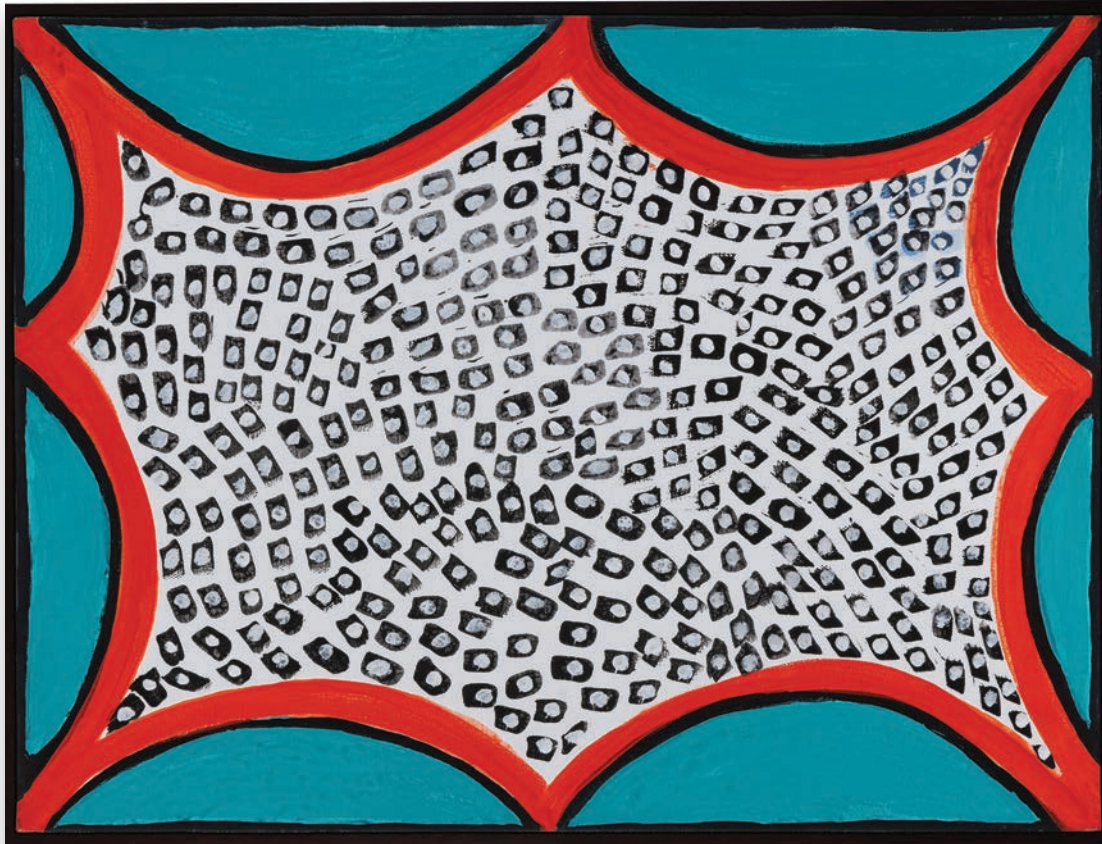
Gooniyandi and Gija

Maruwarra River 1992

synthetic polymer paint on Velin Arches paper

65 × 50 cm

AUD 6,000



JANANGOO BUTCHER CHEREL

circa 1920 – 2009

Gooniyandi and Gija

Girndi, Bush Plum 2007

synthetic polymer paint on canvas

45 × 65 cm

AUD 14,000



JANANGOO BUTCHER CHEREL

circa 1920 – 2009

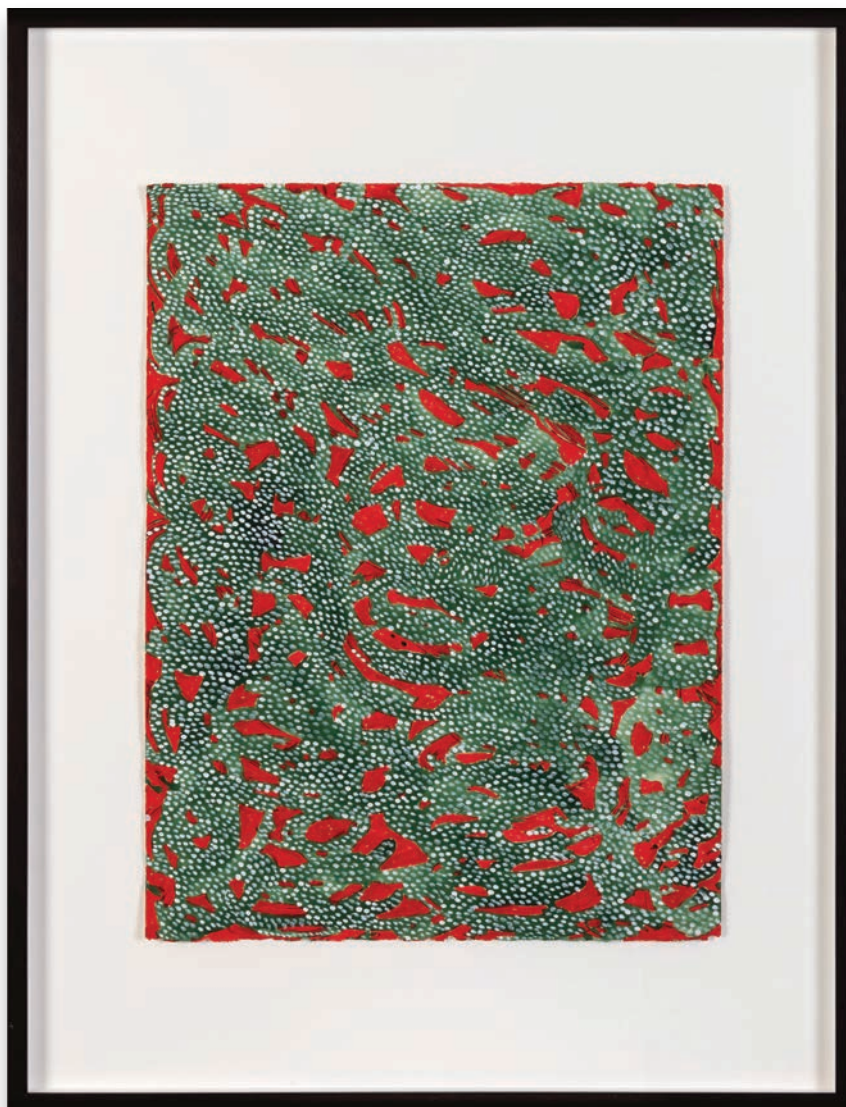
Gooniyandi and Gija

Mullabimbi 2004

synthetic polymer paint on paper

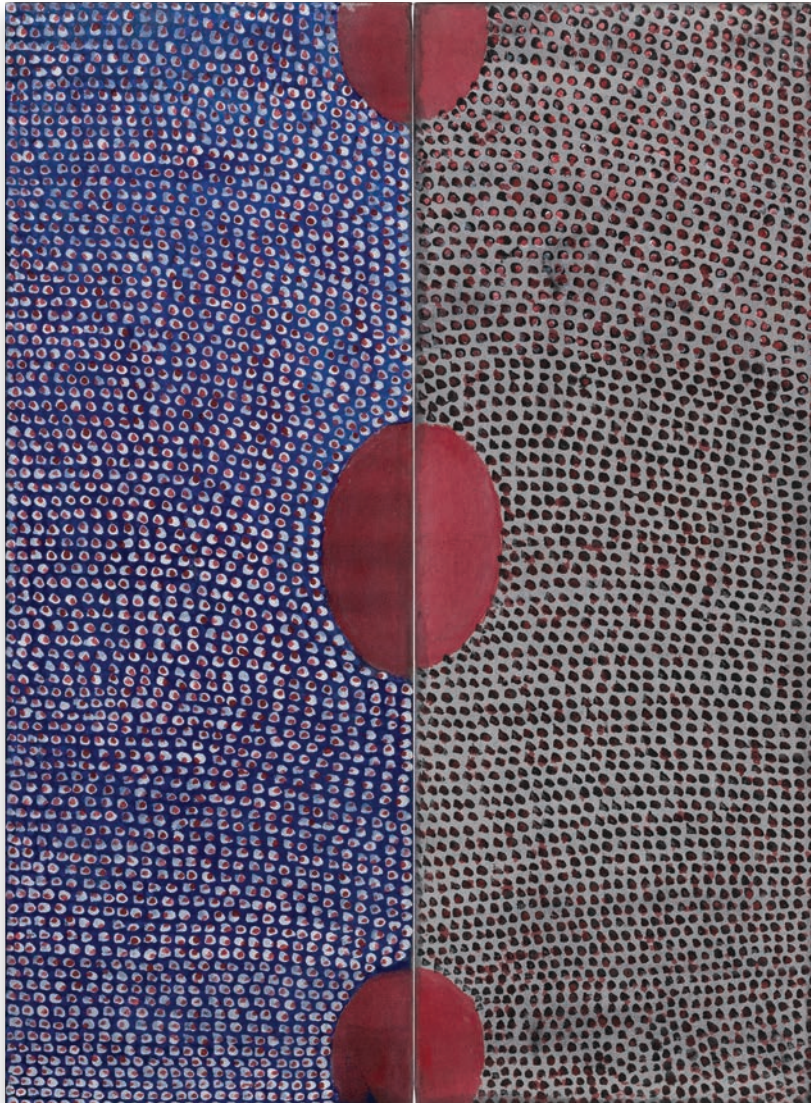
53.5 × 73.5 cm

AUD 8,800



JANANGOO BUTCHER CHEREL
circa 1920 – 2009
Gooniyandi and Gija

Goowgooloo 2001
synthetic polymer paint on paper
66 × 50 cm
AUD 7,700



JANANGOO BUTCHER CHEREL

circa 1920 – 2009

Gooniyandi and Gija

Manyi and Gamba 2002

synthetic polymer paint on linen

diptych 65 × 50 cm (overall)

AUD 14,000



JANANGOO BUTCHER CHEREL
circa 1920 – 2009
Gooniyandi and Gija

Untitled 2006
synthetic polymer paint on canvas
100 × 45 cm
AUD 14,000



JANANGOO BUTCHER CHEREL
circa 1920 – 2009
Gooniyandi and Gija

Yarrali 2004
synthetic polymer paint on canvas
100 × 45,5 cm
AUD 14,000



JANANGOO BUTCHER CHEREL

circa 1920 – 2009

Gooniyandi and Gija

Girndi – Bush Plums 2008

synthetic polymer paint on

Velin Arches paper

38 × 57 cm

AUD 7,700



JANANGOO BUTCHER CHEREL

circa 1920 – 2009

Gooniyandi and Gija

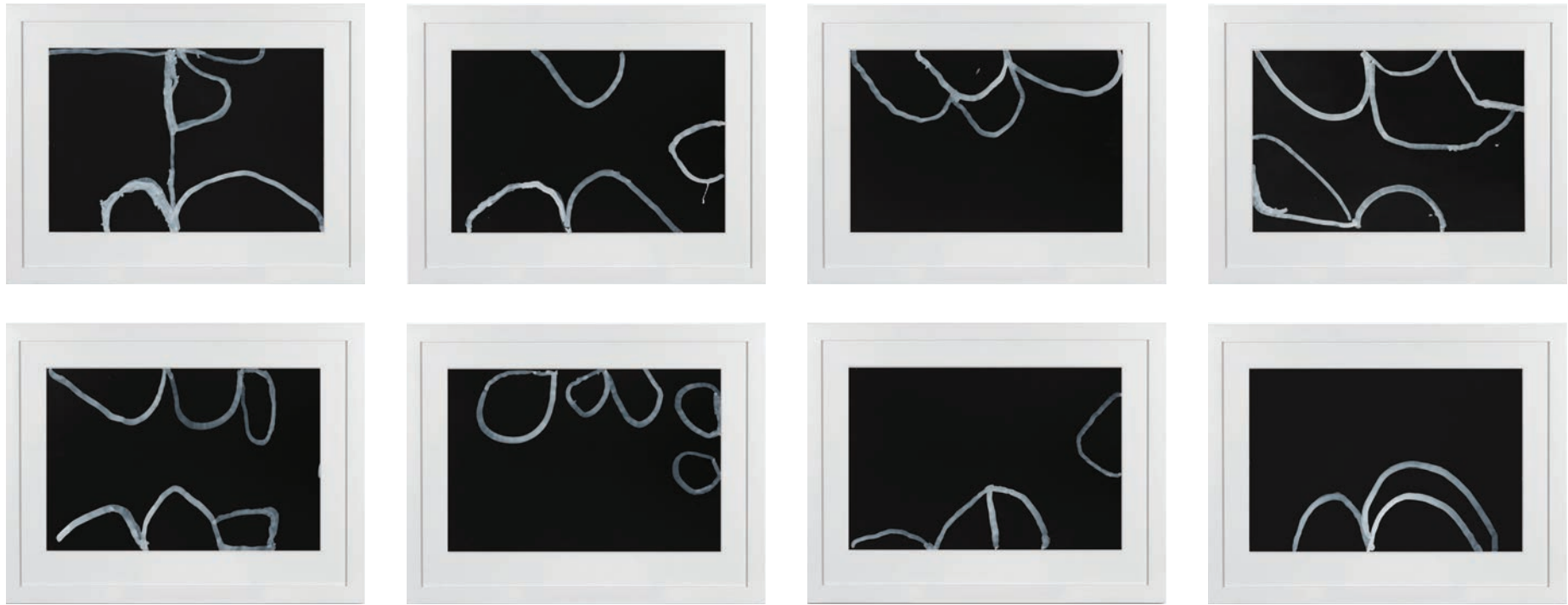
Untitled 2007

synthetic polymer paint on

Velin Arches paper

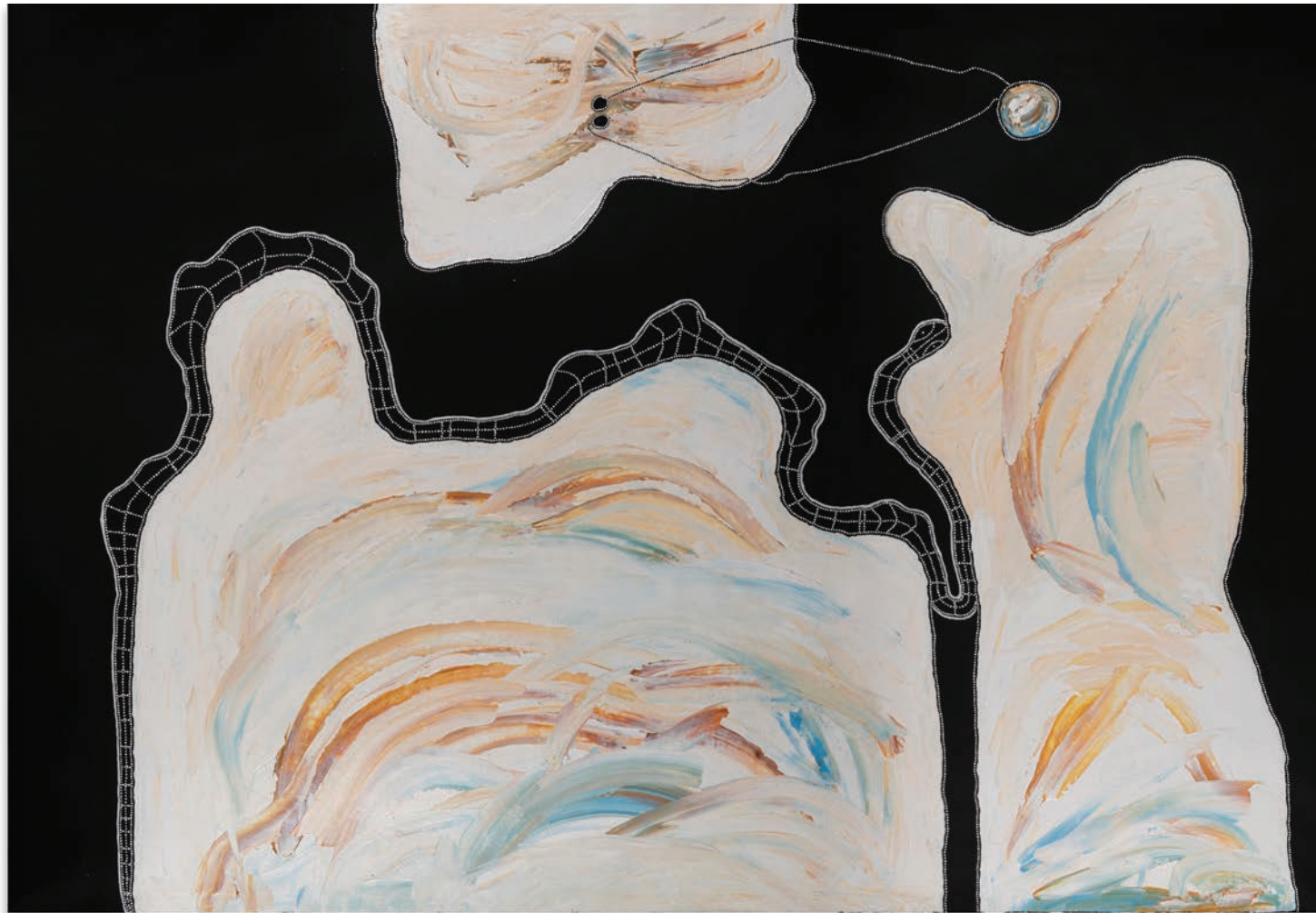
38 × 56 cm

AUD 7,700



PADDY BEDFORD
1922–2007
Gija

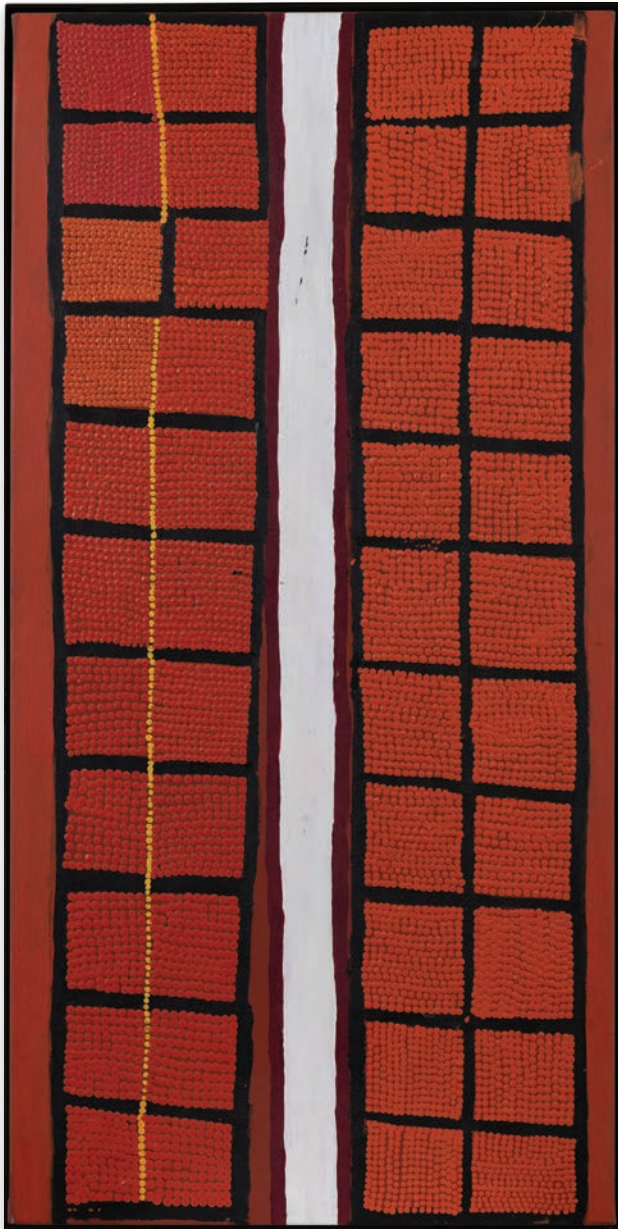
Untitled 2006
gouache on acid-free Crescent board
51 × 76 cm each (8)
AUD 96,000



TIMO HOGAN

born 1973
Pitjantjatjara

Lake Baker 2023
synthetic polymer paint on linen
200 × 290 cm
AUD 40,000



BOXER MILNER TJAMPITJIN

circa 1934 – 2009

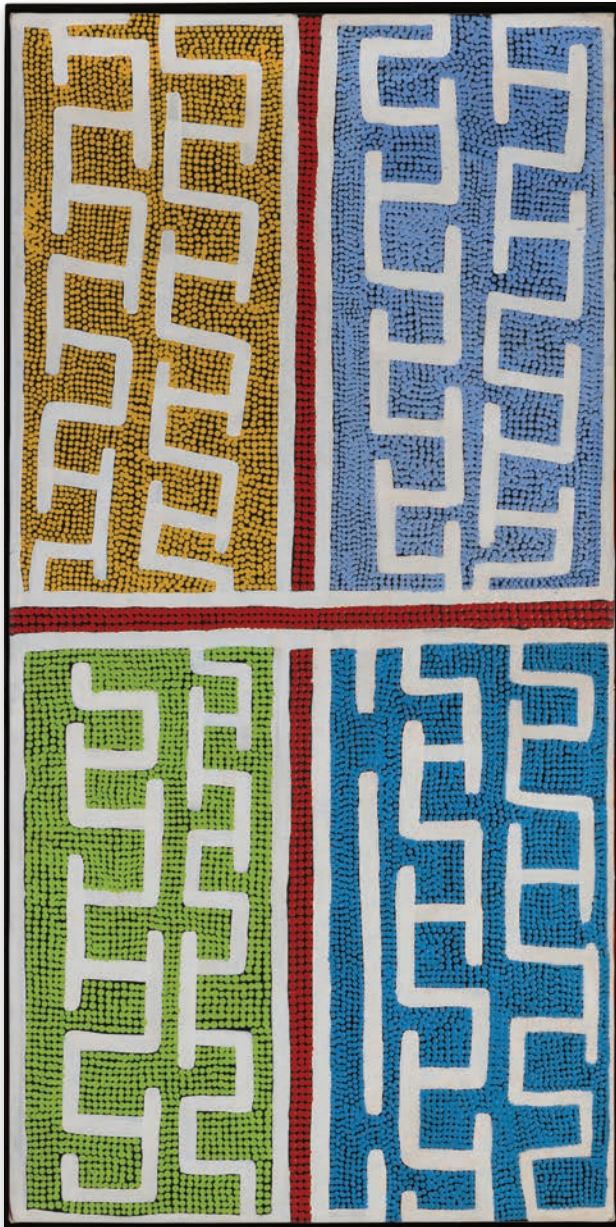
Jaru

Untitled 2004

synthetic polymer paint on linen

100 × 50 cm

AUD 18,000



BOXER MILNER TJAMPITJIN

circa 1934 – 2009

Jaru

Olaïgn 2002

synthetic polymer paint on linen

150.5 × 75.5 cm

AUD 18,000



BOXER MILNER TJAMPITJIN

circa 1934 – 2009

Jaru

Purkitji 2005

synthetic polymer paint on linen

149,5 × 99,5 cm

AUD 60,000



BOXER MILNER TJAMPITJIN

circa 1934 – 2009

Jaru

Purkitji 2006

synthetic polymer paint on linen

90 × 60 cm

AUD 12,000



LEIGH NAMPONAN
born 1969
Wik-Alken, Wik-Mungkan
and Wik-Ngathan
Ku' Eeremangk 2023
natural earth pigments with synthetic
binders on carved milkwood
37 × 67 × 15 cm
AUD 8,000



LEIGH NAMPONAN

born 1969

Wik-Alken, Wik-Mungkan
and Wik-Ngathan

Ku' Ngekanam 2024

natural earth pigments with synthetic
binders on carved milkwood

49 × 113 × 20cm

AUD 12,000



LEIGH NAMPONAN

born 1969

Wik-Alken, Wik-Mungkan
and Wik-Ngathan

Ku' (dog) 2023

natural earth pigments with synthetic
binders on carved milkwood

17 × 48 × 36 cm

AUD 7,000



BEVAN NAMPONAN

born 1963
Wik-Alken, Wik-Mungkan
and Wik-Ngathan

Ku' (dog) 2023
natural earth pigments with synthetic
binders on carved milkwood
67 × 100 × 12 cm
AUD 8,000



GARRY NAMPANON
born 1960
Wik-Mungkan, Wik-Ngathan
and Wik-Alken
Ku' Aw 2024
synthetic polymer paint and
earth pigments on milkwood
34 × 72 × 17 cm
AUD 12,000



GARRY NAMPANON
born 1960
Wik-Mungkan, Wik-Ngathan
and Wik-Alken

Ku' (dog) 2024
synthetic polymer paint and
earth pigments on milkwood
44 × 90 × 18 cm
AUD 15,000



GARRY NAMPANON
born 1960
Wik-Mungkan, Wik-Ngathan
and Wik-Alken

Ku' Knox 2024
synthetic polymer paint and
earth pigments on milkwood
31 × 74 × 15 cm
AUD 12,000



KEITH WIKMUNEA
born 1967
Wik-Mungkan and Wik-Alken

*Theewith Yot.A! | Lots of
White Cockatoo* 2024
natural earth pigments with synthetic
binders on carved milkwood
250 × 170.7 × 80 cm
AUD 75,000



D'LAN CONTEMPORARY

Wurundjeri Country
40 Exhibition St, Melbourne
VIC 3000 Australia

4 East 81st Street
New York, NY 10028
USA

25 East 73rd Street
New York, NY 10021
USA

[DLANCONTEMPORARY.COM.AU](https://dLANCONTEMPORARY.COM.AU)